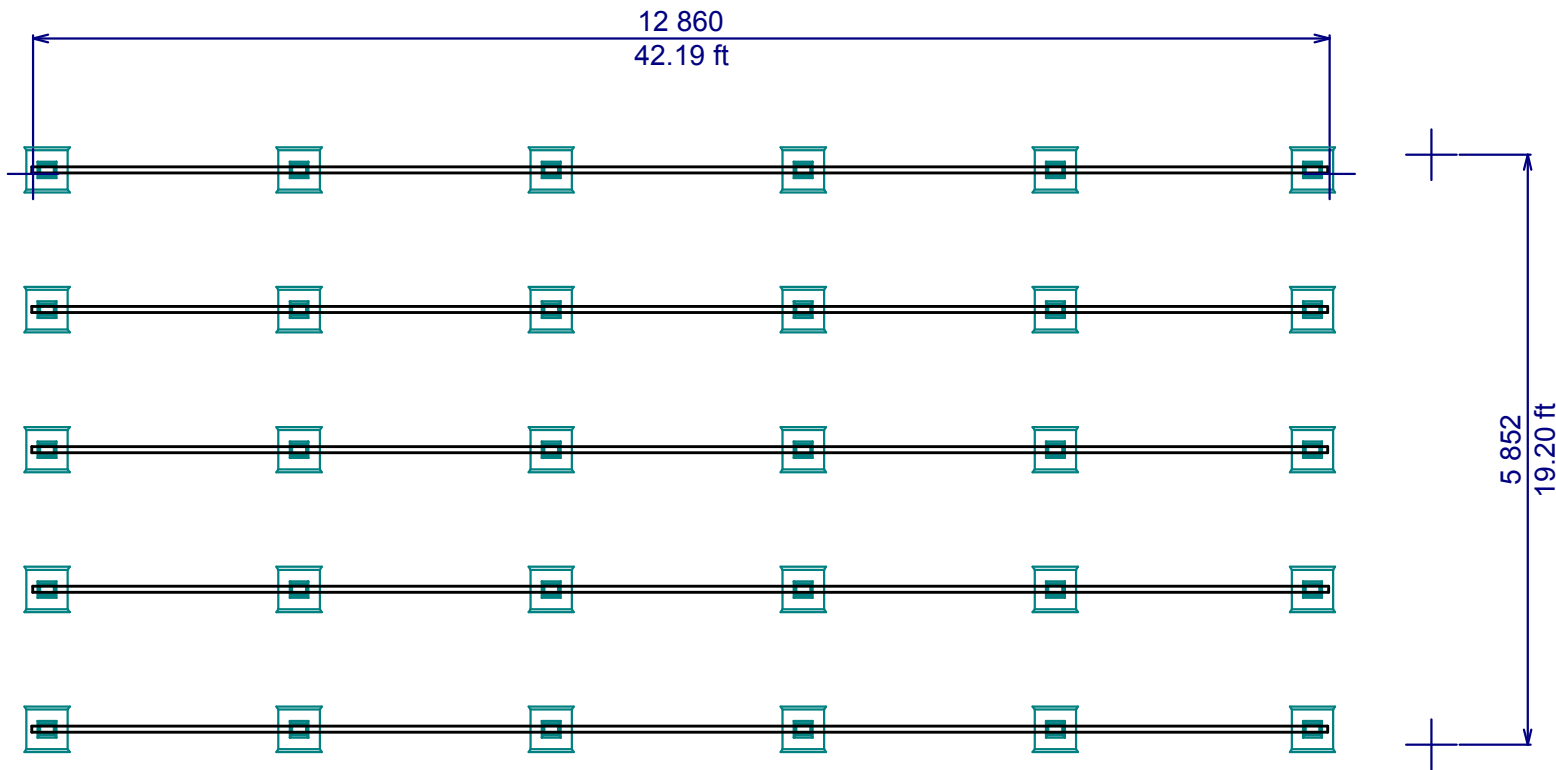
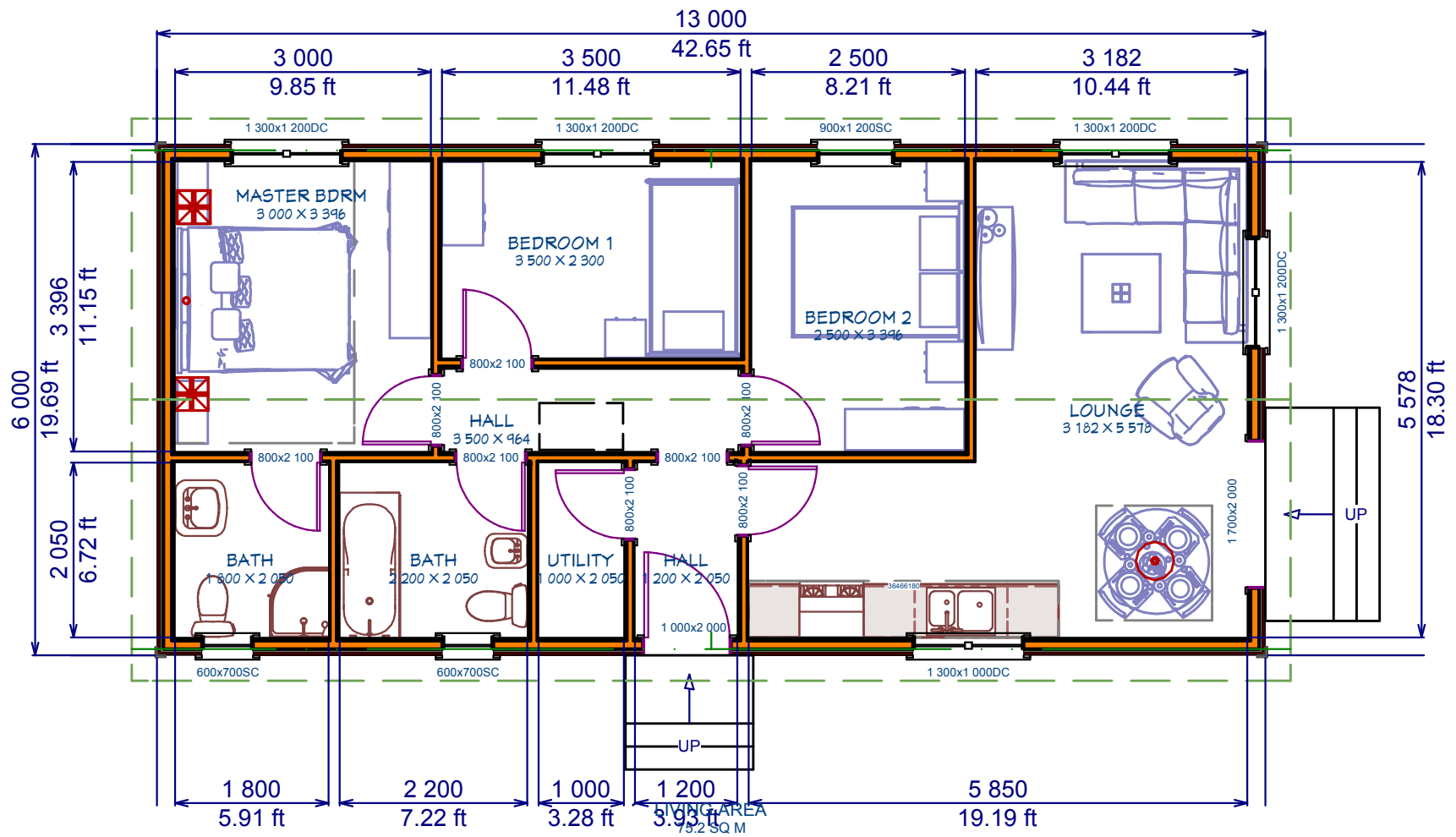




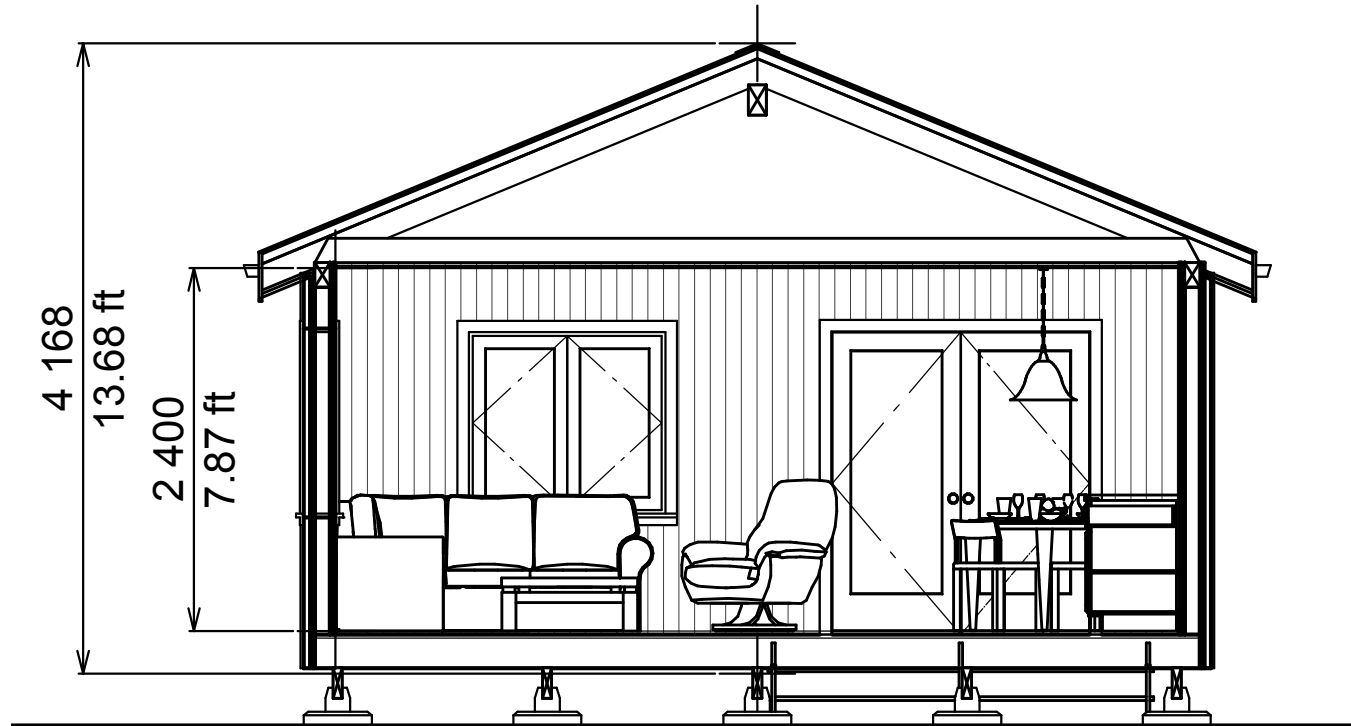
Impression view



Foundations plan  
scale: 1 : 75@A4  
Above the lines in millimeters  
below, in feet - inches



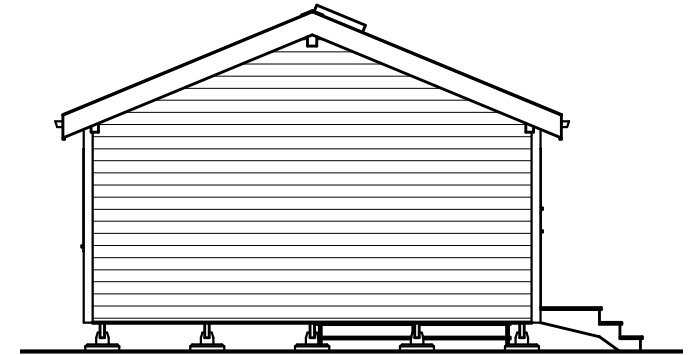
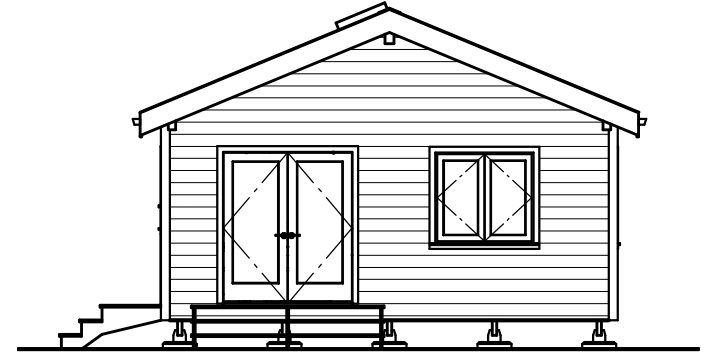
Ground floor plan  
 scale: 1 : 75@A4  
 Above the lines in millimeters  
 below, in feet - inches



Section  
scale: 1 : 50@A4  
Above the lines in millimeters  
below, in feet - inches



Impression ground floor



Elevations  
scale: 1:100@A4  
Above the lines in millimeters,  
below in feet-inches.





Two Halves